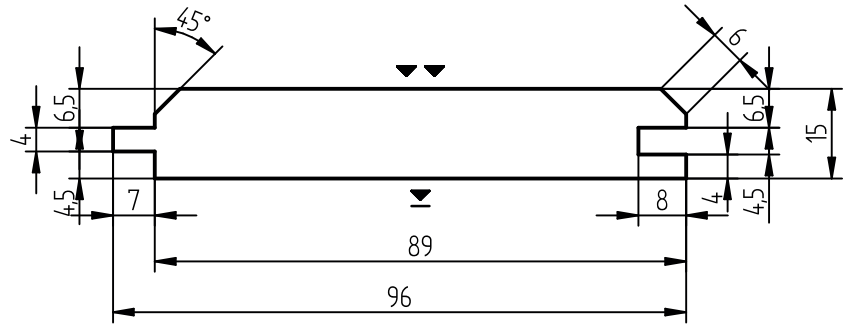
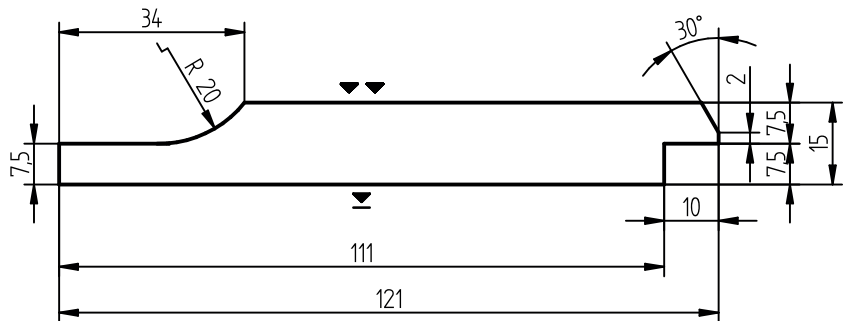


## Treated Cladding Profiles

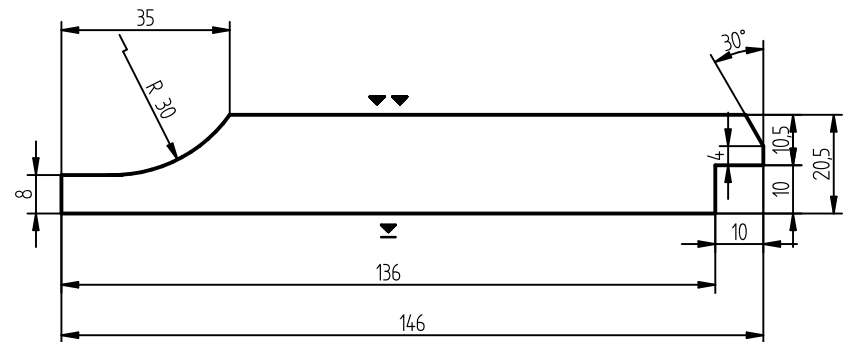
**19 x 100 TGV Cladding,  
Green Treated (User Class 3)  
FSC® Mix 70% (FSC-C004183)**



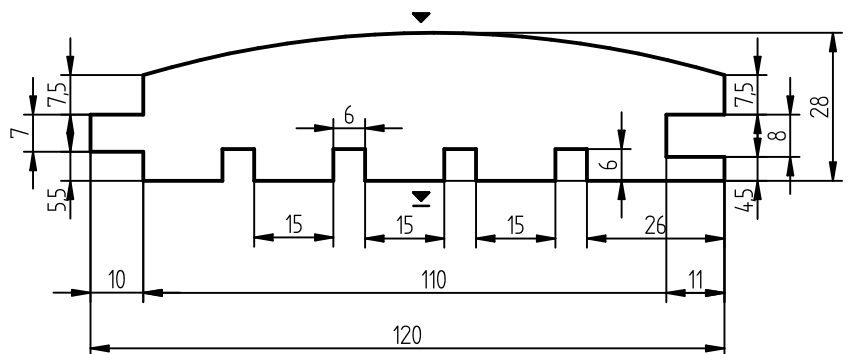
**19 x 125 Shiplap Cladding,  
Green Treated (User Class 3)  
FSC® Mix 70% (FSC-C004183)**



**25 x 150 Shiplap Cladding,  
Green Treated (User Class 3)  
FSC® Mix 70% (FSC-C004183)**



**32 x 125 Loglap Cladding,  
Green Treated (User Class 3)  
FSC® Mix 70% (FSC-C004183)**



**Source Material:  
Treatment:**

Vths Grade European Redwood (Pinus Sylvestris)  
Green in accordance with Hazard Class 3

**Ascot**  
t: 01344 874 137  
e: ascot@thetimbergroup.co.uk

**Clapham**  
t: 0207 720 9494  
e: clapham@thetimbergroup.co.uk

**High Wycombe**  
t: 01494 521 421  
e: highwycombe@thetimbergroup.co.uk

**Hoddesdon**  
t: 01992 460 000  
e: hoddesdon@thetimbergroup.co.uk

**Maidstone**  
t: 01622 738 246  
e: maidstone@thetimbergroup.co.uk

**Poole**  
t: 01202 735 735  
e: poole@thetimbergroup.co.uk