

### CLS (Canadian Lumber Standard)

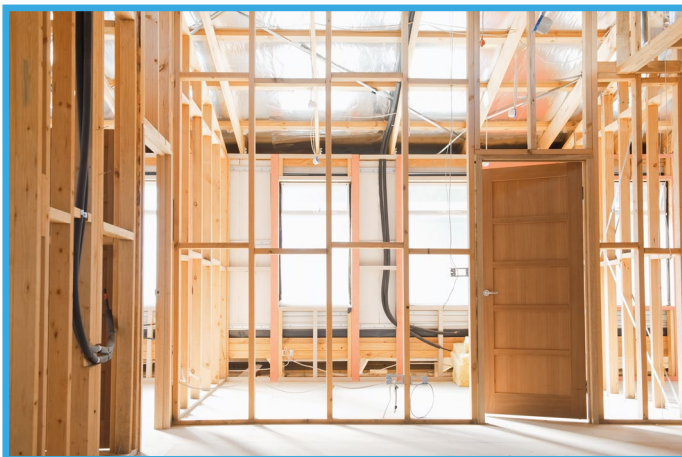
<b>Species:</b>	European Whitewood/Spruce ( <i>pine abies</i> )
<b>Treatment:</b>	Untreated (Low pressure treatment available on request)
<b>Finish:</b>	PAR & Rounded on 4 Corners
<b>Grade:</b>	Kiln Dried and Strength Graded to C16
<b>Country of Origin:</b>	Sweden/Latvia
<b>Certification:</b>	FSC® (FSC-C004183) or PEFC™ (PEFC/(16-37-137))

#### Standard Dimensions:

Nominal Size	Finish Size	Lengths
50 x 75mm	38 x 63mm	2.4m / 3.0m / 4.8m
50 x 100mm	38 x 88mm	2.4m / 3.0m / 4.8m

#### Also Available on Request:

Nominal Size	Finish Size	Lengths
50 x 150mm	38 x 138mm	Various



#### Ascot

t: 01344 874 137

e: ascot@thetimbergroup.co.uk

#### Hoddesdon

t: 01992 460 000

e: hoddesdon@thetimbergroup.co.uk

#### Clapham

t: 0207 720 9494

e: clapham@thetimbergroup.co.uk

#### Maidstone

t: 01622 738 246

e: maidstone@thetimbergroup.co.uk

#### High Wycombe

t: 01494 521 421

e: highwycombe@thetimbergroup.co.uk

#### Poole

t: 01202 735 735

e: poole@thetimbergroup.co.uk